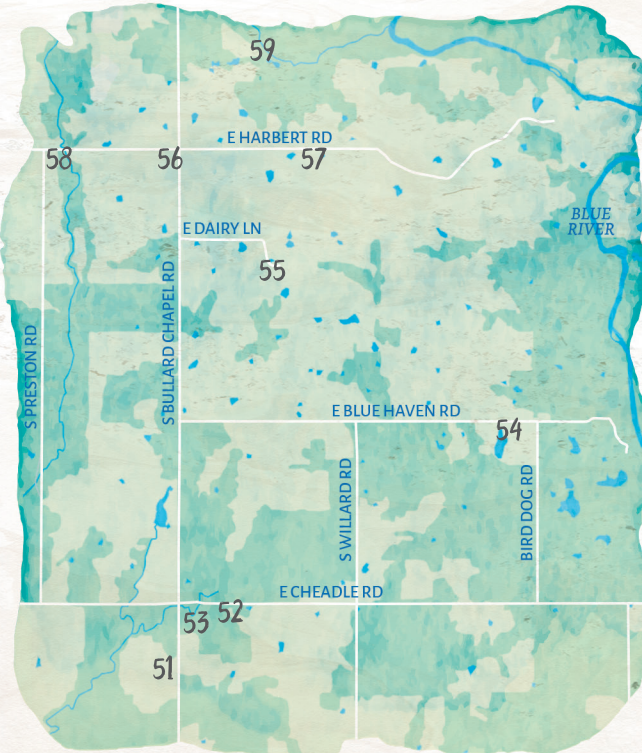




# Tishomingo

WELCOME TO



## Retail

- 5. GRANNY'S ATTIC ANTIQUE MALL:  
1101 W. MAIN STREET, 580-371-3397
- 17. WARPIGS GUNWORKS & OUTDOOR SOLUTIONS:  
307 W. MAIN STREET, 580-257-2225  
THE TRADING POST: 307 W. MAIN, 580-371-9100
- 30. SPA 211: 211 W. MAIN STREET, 580-371-6212
- 37. SARA'S HEARTFELT FLOWERS & GIFTS:  
201 E. MAIN STREET, 580-371-2389
- 15. RUBY RANCH BOUTIQUE:  
318 W. MAIN STREET, 580-371-5058
- 18. MURRAY ON MAIN:  
300 W. MAIN STREET, 580-371-0350
- 26. JUNK STARS: 210 W. MAIN STREET, 580-371-8575
- 27. MULBERRY WINE BAR + RETAIL:  
215 W. MAIN STREET, 580.387.0095
- 29. NIKOLE'S COUNTRY STORE:  
208 W. MAIN STREET, 580-371-5431
- 31. KEDFORD BOUTIQUE:  
206 W. MAIN STREET, 580-387-5077
- 32. THE CLOSET MINISTRY & THRIFT SHOP:  
203 W. MAIN STREET, 580-371-6767
- 3. TISH PAWN SHOP: 101 WESTERN AVE, 580-371-2661
- 34. THE INDIE CINEMA:  
114 W. MAIN STREET, 580-371-0096
- 36. THE ROSE PETAL:  
108 E. MAIN STREET, 580-371-3560

## Lodging

- 6. TISH INN: 611 W. MAIN STREET, 580-371-3500
- 28. THE PENNINGTON INN:  
213 W. MAIN STREET, 580-387-9026
- 19. THE TISH HOUSE:  
300 W. NEIL ARMSTRONG PL #3, AIRBNB
- 23. CEDAR RIDGE HIDEAWAY:  
2008 W. CEDAR RIDGE ROAD, 580-371-8044
- 1. ROCK CREEK RV PARK: 5300 W. HWY 22, 580-371-6782
- 2. HWY 22 RV PARK: 1553 W. HWY 22, 580-371-7447
- 24. WILD HORSE CABIN: 1625 S. HWY 377, 580-920-6091



#VISITCHICKASAW  
CHICKASAWCOUNTRY.COM



JOHNSTONCOUNTYOKCHAMBER.COM

- 59. BLUE RIVER PUBLIC HUNTING & FISHING AREA  
ENTRANCE: 3251 S. HUTCHINS LANE, 580-443-5728
- 58. THE WILDFLOWER INN:  
1300 E. HARBERT ROAD, 580-371-1582
- 56. SCOTTY'S BLUE RIVER ONE STOP:  
4501 S. BULLARD CHAPEL RD, 580-371-9288
- 57. CEDAR & STONE BED AND BREAKFAST:  
2502 E. HARBERT ROAD, 580-371-5332
- 55. THE WILDFLOWER: 2611 E. DAIRY LANE, 580-371-1582
- 54. BLUE ACRES RANCH:  
5080 E. BLUE HAVEN ROAD, 214-986-1130
- 53. BLUE RIVER RIBS:  
7050 S. BULLARD CHAPEL ROAD, 580-443-5476
- 52. OLD SILO WINERY:  
2300 E. CHEADLE ROAD, 580-257-0400
- 51. THE BUNKHOUSE:  
7401 S. BULLARD CHAPEL ROAD, 580-665-6347

## Dining

- 20. GONZALEZ MEXICAN RESTAURANT:  
110 N. KEMP STREET, 580-371-0102
- 25. OLE RED AND THE DOGHOUSE:  
214 W. MAIN STREET, 580-257-2217
- 44. PARADISE DONUTS:  
907 E. MAIN STREET, 580-387-5090
- 47. SIMPLE SIMON'S PIZZA:  
1201 E. MAIN STREET, 580-371-3371
- 48. COUSIN'S FOOD DEPOT:  
1301 E. MAIN STREET, 580-371-9501
- 4. FISH TALES: 10120 LIDA LN., 580-371-3550
- 13. LATTE DA COFFEE HOUSE & BISTRO:  
406 W. MAIN STREET, 580-371-2828
- 14. DAIRY QUEEN: 404 W. MAIN STREET, 580-371-2366
- 16. BOOM-A-RANG DINER:  
314 W. MAIN STREET, 580-371-3688
- 35. IT'S WORTH IT NUTRITION:  
106 W. MAIN STREET, 580-224-1113
- 45. DONUT PALACE:  
1120 E. MAIN STREET, 580-371-3338
- 50. BLUE RIVER NUTRITION:  
105 N. NESHOPA STREET, 580-483-6686

## Points of Interest

- 7. CHICKASAW INFORMATION CENTER:  
504 W MAIN, 580-387-2762
- 9. CHICKASAW COUNCIL HOUSE MUSEUM:  
209 N. FISHER, 580-371-3351
- 8. CHICKASAW NATIONAL CAPITOL:  
411 W. 9TH STREET, 580-371-9835
- 12. JOHNSTON COUNTY HISTORICAL SOCIETY & CHICKASAW  
BANK MUSEUM: 413 W. MAIN STREET, 580-371-3141
- 22. TISHOMINGO GOLF COURSE:  
3600 W. GOLF COURSE ROAD, 580-371-2604
- 10. JOHNSTON COUNTY WAR MEMORIAL/BLUE ANGEL JET:  
S. CAPITOL STREET
- 11. PENNINGTON CREEK PARK/SPLASH PAD/RV/TRAILS:  
S. CAPITOL STREET, 580-371-2369
- 21. PLANT-TATION STATION:  
202 N. KEMP STREET, 580.371.1968
- 33. THE STADTLER EVENT CENTER:  
202 W. MAIN STREET, 580.421.7400
- 42. MSC GUN RANGE: S. AIRPORT ROAD, 580-387-7000
- 41. MSC EQUESTRIAN CENTER:  
S. AIRPORT ROAD, 580-387-7000
- 39. MURRAY STATE COLLEGE:  
1 MURRAY CAMPUS, 580-387-7000
- 40. JOHNSTON COUNTY SPORTS COMPLEX:  
S. BYRD STREET, 580-387-7000
- 43. FARMER'S MARKET:  
CORNER OF MAIN AND BYRD STREETS, 580-371-2470
- 49. TISHOMINGO NATIONAL WILDLIFE REFUGE:  
11766 S. REFUGE ROAD, 580-371-2402
- 38. TISHOMINGO CITY CEMETERY:  
401-499 W. MAIN STREET, 580-371-2369
- 46. TISHOMINGO CITY HALL:  
1130 E. MAIN STREET, 580-371-2369



# welcome to TISHOMINGO, oklahoma

