



12022 Greenleaf Rd.

Braggs, OK 74423

(918) 487-5196

GreenleafCabins@travelok.com

Greenleaf State Park

Cabin Information

GREENLEAF STATE PARK
2018 CABIN RATES
(All cabins are stand-alone units)

Tax Rate 5.15%

Muskogee County Lodging Tax 5% (effective January 1, 2017)

December 1, 2017 – February 28, 2018

Winter Rates

	<u>Sun-Thursday</u>	<u>Weekends</u>
Cabins 1-4 (Parkview for four)	68.00	88.00
Cabin 5 & 12	73.00	93.00
Cabin 6 (Parkview for two)	53.00	73.00
Cabins 7-11 (Parkview for four)	68.00	88.00
Cabins 13-14 (Lakeview for four)	79.00	99.00
Cabin 15 (Cabin on the Lake for six)	60.00 disabled	60.00 disabled
Cabin 15 (Cabin on the Lake for six)	110.00 non-disabled	110.00 non-disabled
Cabin 20 (Parkview for eight)	150.00	175.00

March 1 – November 30, 2018

	<u>Sun-Saturday</u>	<u>Holiday</u>
Cabins 1-4 (Parkview for four)	88.00	113.00
Cabins 5 & 12	93.00	118.00
Cabin 6 (Parkview for two)	73.00	98.00
Cabins 7-11 (Parkview for four)	88.00	113.00
Cabins 13-14 (Lakeview for four)	99.00	124.00
Cabin 15 (Cabin on the Lake for six)	60.00 disabled	85.00
Cabin 15 (Cabin on the Lake for six)	110.00 non-disabled	135.00
Cabin 20 (Parkview for eight)	175.00	200.00

2018 CABIN DESCRIPTIONS

- Dishes and linens furnished for four guests; except cabin #6 (for two guests).
- Dish Network-flat screen TV in all cabins. Dish soap, toaster, coffee pot clock radio
And microwave in all cabins.
- Showers in all cabins – **Cabin size – approx. 350 sq. ft.**
- **Check in – after 3pm.; Check out – by 11:00 am. On departure date.**
- **Two night stay required on weekends; three night stay on holiday weekends.**
- Housekeeping will replenish linens. Leave bucket outside by 10 am.
- Grill/picnic table outside all cabins; Heat and air units in all cabins.
- \$15 per pet, per day fee required for cabins; *service dogs only* in cabin 15 (Cabin on the Lake)
- **Non-smoking cabins**

Cabin	Fireplace	Screened porch	View	Kitchen Appliances	Other Info
1	No	No	Park	Full size kitchen appliances	Queen size bed/couch
2	No	No	Park	Full size kitchen appliances Larger refrigerator	Queen size bed/couch
3	No	No	Park	Full size kitchen appliances	Queen size bed/couch
4	No	No	Park	Full size kitchen appliances	Queen size bed/couch
5	Insert	Yes	Park	Full size kitchen appliances Larger refrigerator	Queen size bed/couch Ramp walkway, H/C sto Screened porch
6	Insert	No	Park	Full size kitchen appliances	Queen size bed Very small cabin for two
7	Open w/mantle	No	Park	Full size kitchen appliances	Queen size bed/couch
8	Insert	No	Park	Full size kitchen appliances	Queen size bed/couch Ramp walkway
9	Insert	No	Park	Full size kitchen appliances	Queen size bed/couch
10	Insert	No	Park	Full size kitchen appliances	Queen size bed/couch
11	Insert	No	Park	Full size kitchen appliances	Queen size bed/couch
12	Insert w/glass doors	No	Lake	Full size kitchen appliances	Queen size bed/couch
13	Open	Yes	Lake	Full size kitchen appliances	Queen size bed/couch Wall in bedroom Screened porch
14	Insert	Yes	Lake	Full size kitchen appliances	Queen size bed/couch <u>TV in bedroom</u> Screened porch
15	Open	Yes	Lake	Full size kitchen appliances Side-by-side refrigerator No door for bedroom <u>SERVICE DOGS ONLY</u>	Hospital bed/double bed Couch w/hide-a-bed Couch Telephone – 487-5273
20	No	No	Park	Full size kitchen appliances, Coin-operated washer & dryer	Queen size bed/couch Two sets of bunk beds Fenced back yard

CABINS	1
	2
	3
	4



Exterior Photo

Notice the flat rock work on these cabins. It differs in appearance from cabins 5-14. These cabins feature a wooded surrounding. Deer can be seen frequently roaming this area.

Cabins 1, 2 and 3 are adjacent to each other. Cabin 4 is on the opposite side of the road.



Bedroom and Living room area.
Cabins tile floors.

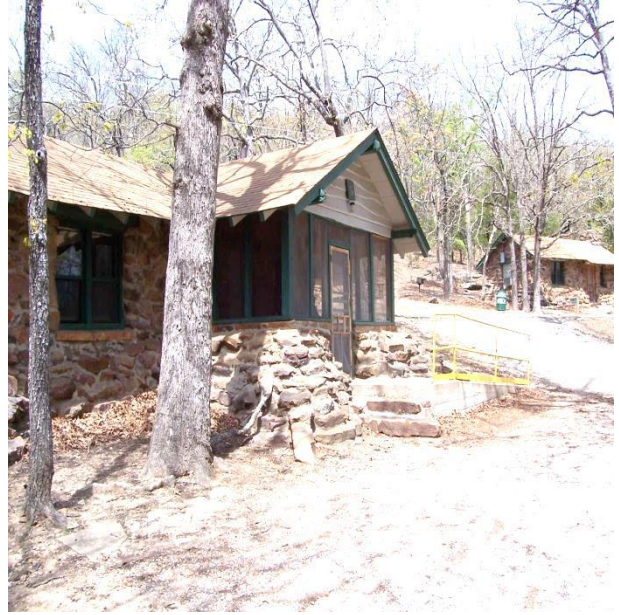


Full Kitchen with microwave and all dishes and linens furnished.



CABIN 5

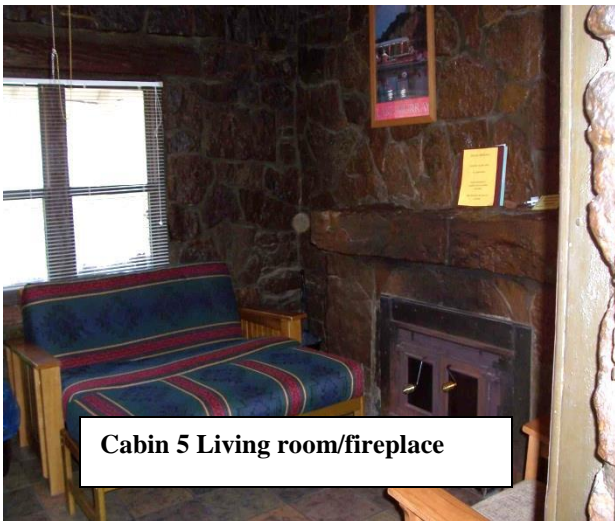
Kitchen offers full kitchen appliances, dishes for four. Coffee pot, microwave, toaster, and more!



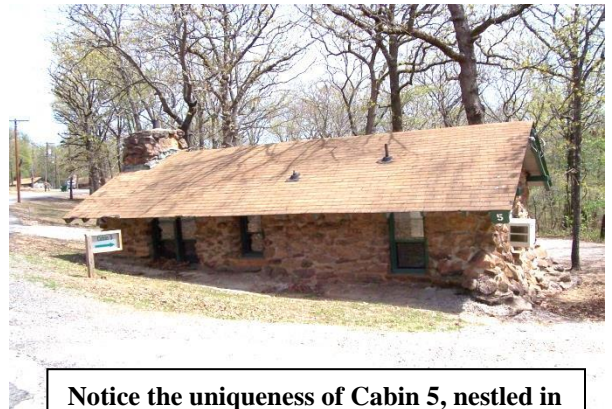
Cabins features a screened in porch and ramp for easy access



Linens are furnished. Cabin offers heat and air. Dining area and bathroom are all featured here.



Cabin 5 Living room/fireplace



Notice the uniqueness of Cabin 5, nestled in the hillside. The native stone exterior is common in our cabins. The Living room features a fireplace.

This cozy cabin for two features a great park view and has a picnic table and grill outside.



Native stone on the outside and beautiful rock work on the inside make this a quaint cabin.



The bedroom features a queen sized bed. Linens are furnished.

CABIN 6



This cabin features heat and air, bathroom, shower and kitchen areas.



The kitchen features dishes for two, coffeepot and toaster as well as basic kitchen utensils.

CABIN 8

This cabin features a ramp for easy access into the cabin. Outdoors you will find a picnic table and grill. Wooded area behind the cabin is a great place to see deer and turkeys.

The kitchen features full size appliances, microwave, toaster, coffee pot, and all dishes to accommodate up to four guests.



The bedroom has a vanity/sink and heat and air. All linens are furnished to sleep up to four guests.



CABIN 7, 9, 10, 11



Living room and dining area. Fireplace



Bedroom - vanity w/sink - bathroom -



The living area to en accommodates up to two sleepers. There is also a t v.

Full Kitchen Appliances - dishes for four. Basic cooking utensils, pots and pans.



Cabin Exteriors

CABIN 13 and 14



CABIN 20
The two bedroom cabin.

CABINS 13 & 14
These LAKEVIEW cabins are favorites. They feature full kitchen with dishes for four and basic cooking utensils.



A dining area and bedroom are featured here. All linens are furnished for four guests.



A screened in porch, outside grill and picnic table and the occasional wildlife roaming by make this a great cabin to enjoy outdoors as well.



ized
ht and basic
ted washer
utility room

Front Exterior
The back yard is fenced.



One bedroom features a queen sized bed and the other bedroom is equipped with two sets of bunk beds.



The living room features a loveseat, queen sized sleeper sofa, TV, and a dining table.



The bathroom features a tub/shower.

GREENLEAF STATE PARK
2018

12022 Greenleaf Rd.
Braggs, OK 74423
Email: greenleafcabins@travelok.com

918-487-5196 or 487-5622
Fax: 918-487-5406
Office Hours: 8:00 am - 4:30 pm daily

Pool (open Memorial Day through mid August)

918-487-5051

Pool Hours: 12 noon until 7 pm. Closed Wednesday and Thursday

In park guests only from mid August through Labor Day

Daily Fee: \$4.00 per person \$3.00 per person - Cabin Guests/campers

Twilight Hours: 6 pm to 7 pm every day - pool admission is \$1.00 per guest

Miniature Golf

Daily Fee - \$3.00 per person

Equipment available at park office 8-4:30 pm. daily. Equipment also available at pool during summer season.

Heated Fishing Dock (not heated in late spring to late fall) - NOT PART OF CABIN RENTAL

Marina concessionaire - located just past Community Building in green building.

Rate \$5.00 person per day until midnight - NO EXCEPTIONS. Dock is open 24 hours daily.

New charges accrue at midnight.

Marina - seasonal operation

918-487-5857

Soft drinks and ice cream - Grill- Store has groceries, ice and bait for sale.

Community Building (Reservations required)

Hours: 8:00 a.m. - 11:00 p.m.

Rates: \$125/Day on weekends and \$100/day weekdays (Sundays-Thursdays)

Greenleaf Kids Pond - The pond is open to fishing by kids 16 and under and totally disabled individuals. The pond area features a classroom kiosk, picnic tables, accessible walkways and an accessible fishing platform. Qualifying age guest's fish free of charge.

Laundry Center - Adjacent to Whispering Winds Reunion Center. Vending operation.

Shelter and Pavilion Information -

Hoot Owl Pavilion is located in Gobbler Ridge Campground – Reservations required

Shady Hollow Pavilion is located in Playside Campground – Reservations required

Small meeting room is located near the Community Building – Reservations required.

Rates: \$75.00 per day - Shady Hollow (not enclosed) -

\$110.00 per day - Hoot Owl (enclosed) with air/heat units, kitchen appliances.

\$ 85.00 per day – Small meeting room (enclosed with tables and chairs)

Cabin info - email: greenleafcabins@travelok.com

Proof of Disability

15% off cabin rentals

Half off the pad on RV site rentals

Half off tent sites

You will need one of the following in order to receive the disability discount. These documents must include proof of the 100% disability:

- *Medicare card issued to an individual prior to their 65th birthday*
- *Notice of Award Letter from Social Security Administration*
- *Hunting and fishing license that notes total disability*
- *Award letter issued by the Dept. of Veteran Affairs*
- *Document issued by a retirement or insurance board, commission or administration that attest to the individual's total disability*
- *Physicians' letter, on letterhead stationery, that declares the individual is totally disabled*