



Greenleaf State Park

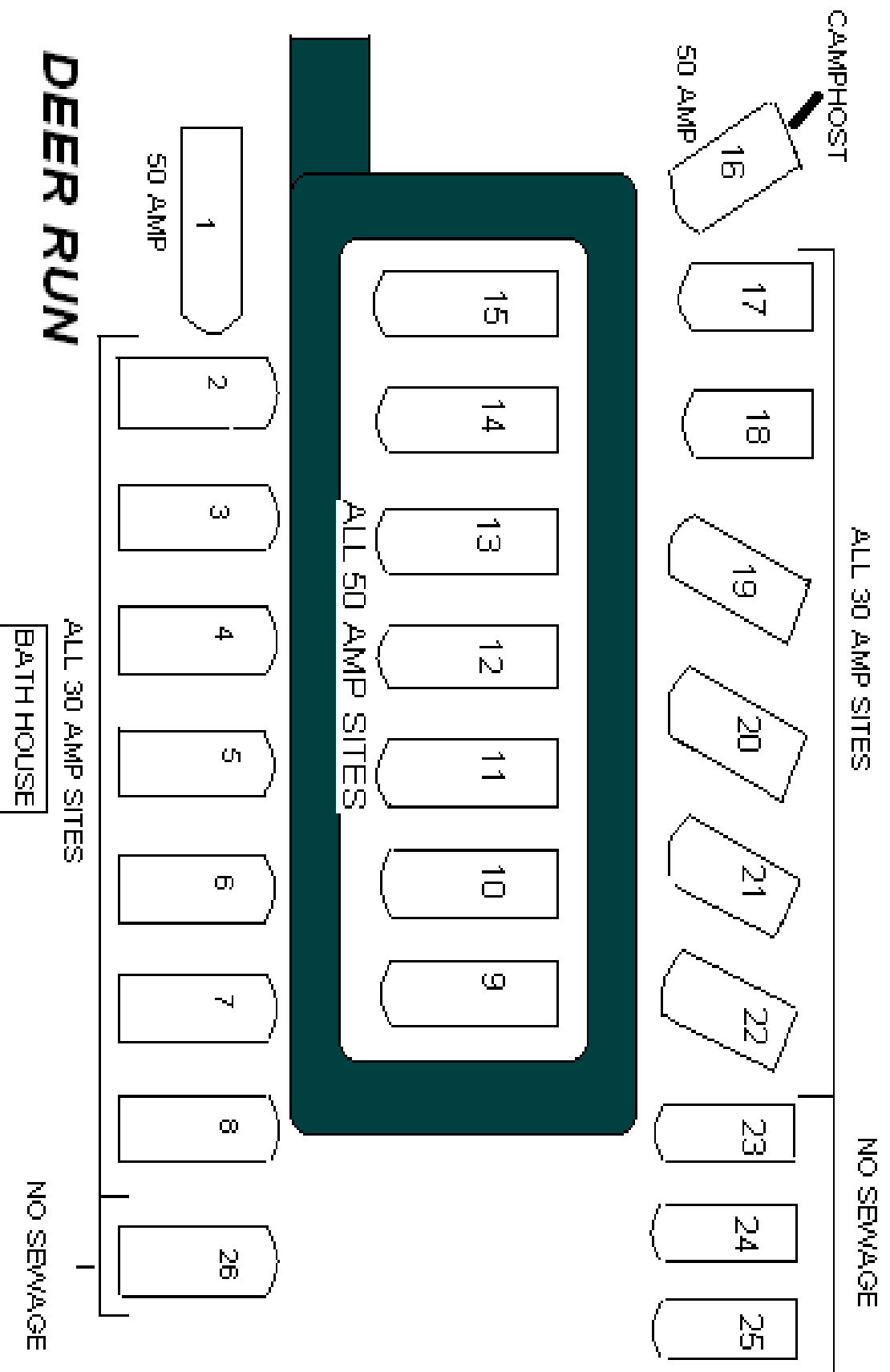
12022 Greenleaf Rd.

Braggs, OK 74423

(918) 487-5196

GreenleafCabins@travelok.com

Campground Information



DEER RUN

CAMPHOST

50 AMP

ALL 30 AMP SITES

NO SEWAGE

ALL 50 AMP SITES

50 AMP

ALL 30 AMP SITES

BATH HOUSE

NO SEWAGE

GREENLEAF STATE PARK - DEER RUN RV SITES

All sites have full hook-ups unless noted. Sites are first come; first served.

Site No.	Pad Type	Length of Pad	Sunny/Shady	Amp	Notes
1	Asphalt	39	Shady	50	
2	Asphalt	41	Sunny	50	
3	Asphalt	40	Sunny	50	
4	Asphalt	40	Shady	50	
5	Asphalt	40	Shady	50	
6	Asphalt	40	Sunny	50	
7	Asphalt	40	Sunny	50	
8	Asphalt	38	Shady	50	
9	Asphalt	40	Shady	50	
10	Asphalt	43	Shady	50	
11	Asphalt	40	Sunny	50	
12	Asphalt	40	Sunny	50	
13	Asphalt	38	Sunny	50	
14	Asphalt	39	Sunny	50	
15	Asphalt	39	Shady	50	
16	Asphalt	43	Shady	50	<i>Camp host</i>
17	Asphalt	51	Sunny	30	
18	Asphalt	50	Shady	30	Utilities are backwards
19	Gravel	48	Shady	30	
20	Gravel	48	Shady	30	
21	Gravel	46	Shady	30	
22	Gravel	37	Shady	30	
23	Gravel	32	Shady	30	No sewer
24	Gravel	34	Shady	30	No sewer
25	Gravel	36	Shady	30	No sewer
26	Gravel	30	Shady	30	No sewer

Deer Run

Camp Host

17

18

19

20

21

22

23

24

25

15

14

13

12

11

10

9

26

1

2

3

4

5

6

7

8





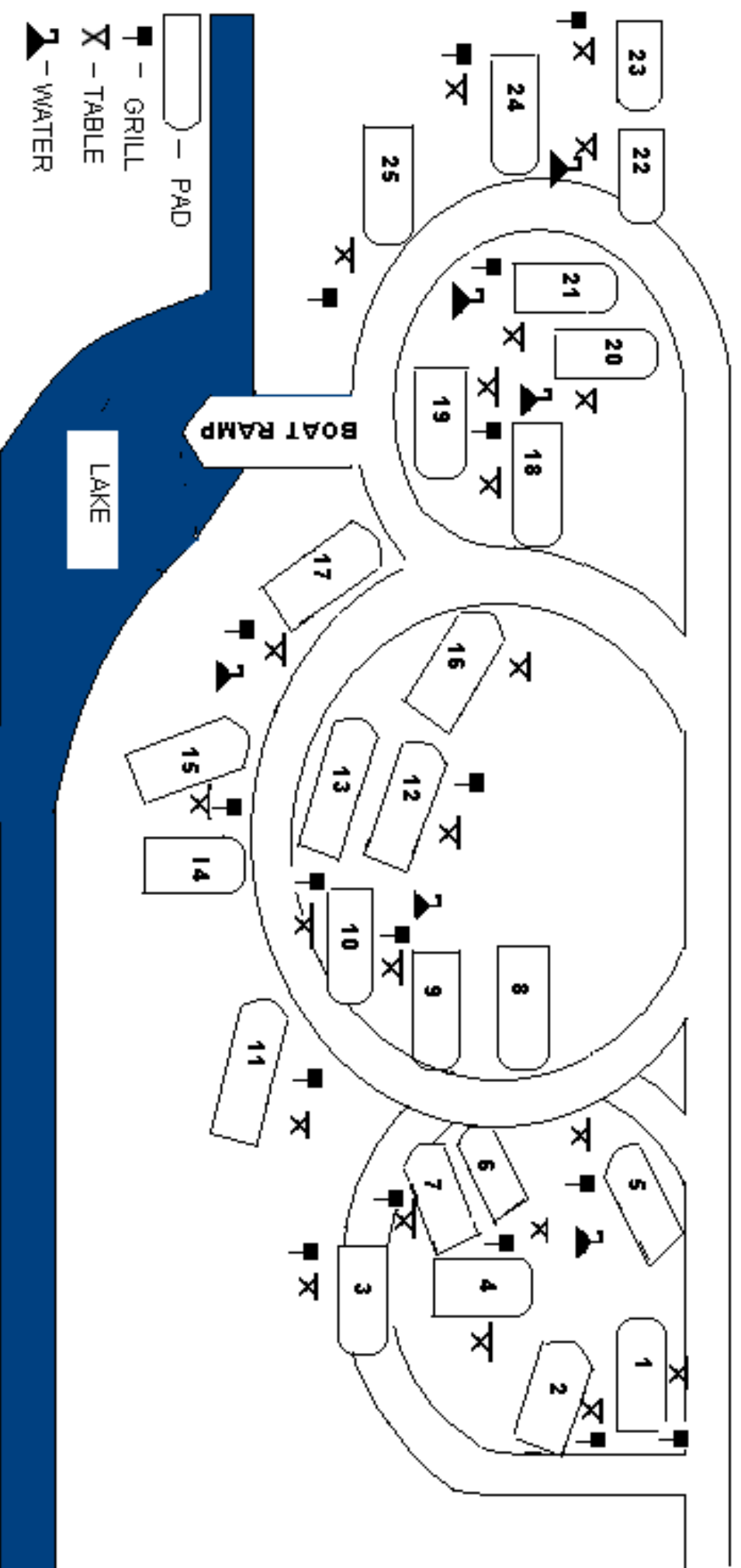
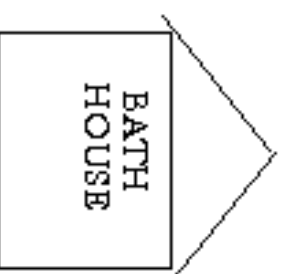
Cypress Row

Bathhouse

- 1
- 2
- 3
- 4
- 5
- 6
- 7
- 8
- 9
- 10
- 11
- 12
- 13
- 14
- 15
- 16
- 17
- 18
- 19
- 20
- 21
- 22
- 23
- 24
- 25

CYPRESS ROW

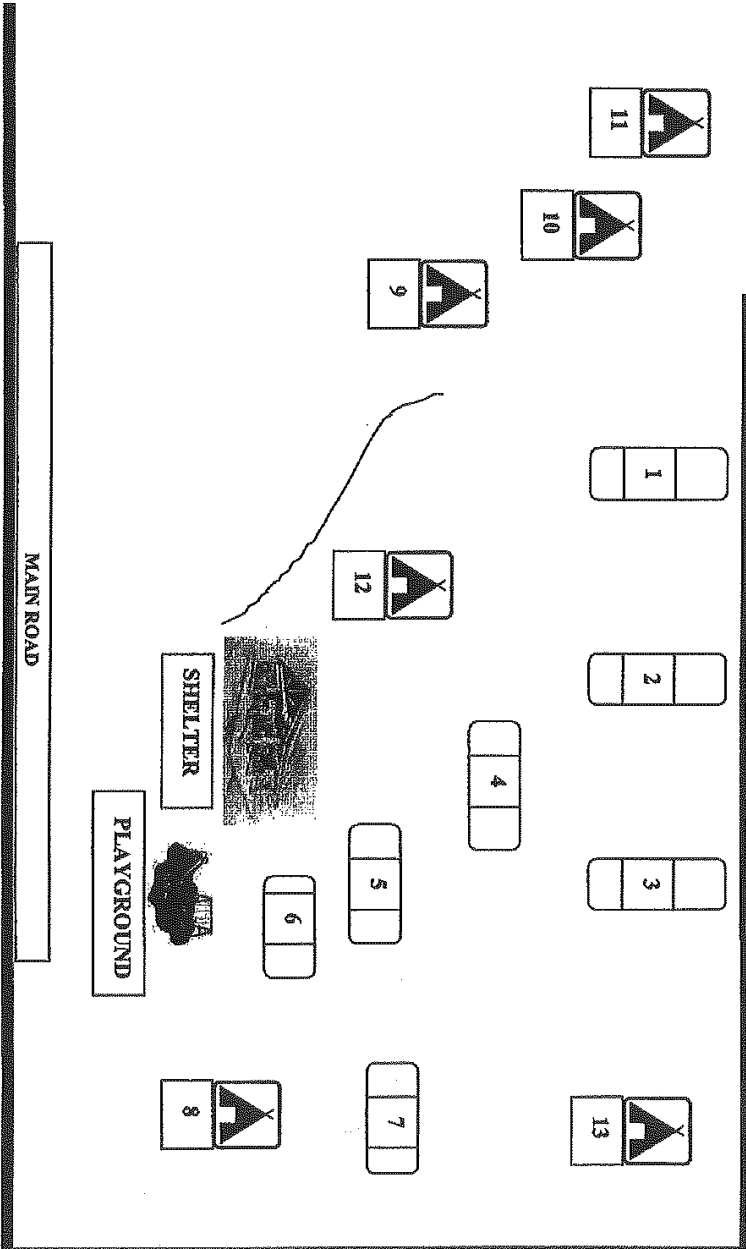
ALL 30 AMP SITES &
SHARED WATER

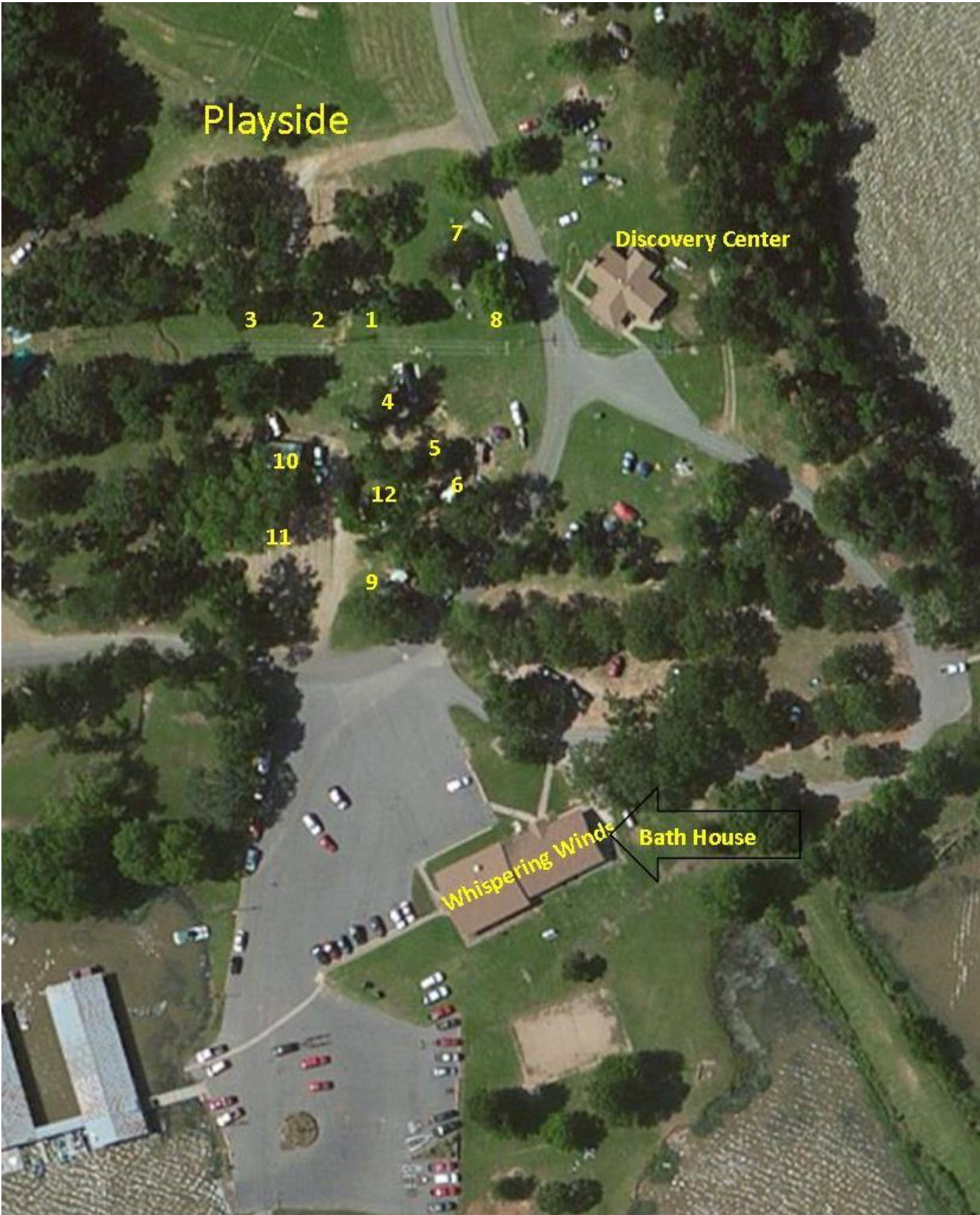


PLAYSIDE

RV: \$20

TENT: \$12





Playside

Discovery Center

Whispering Winds

Bath House

3

2

1

7

8

4

5

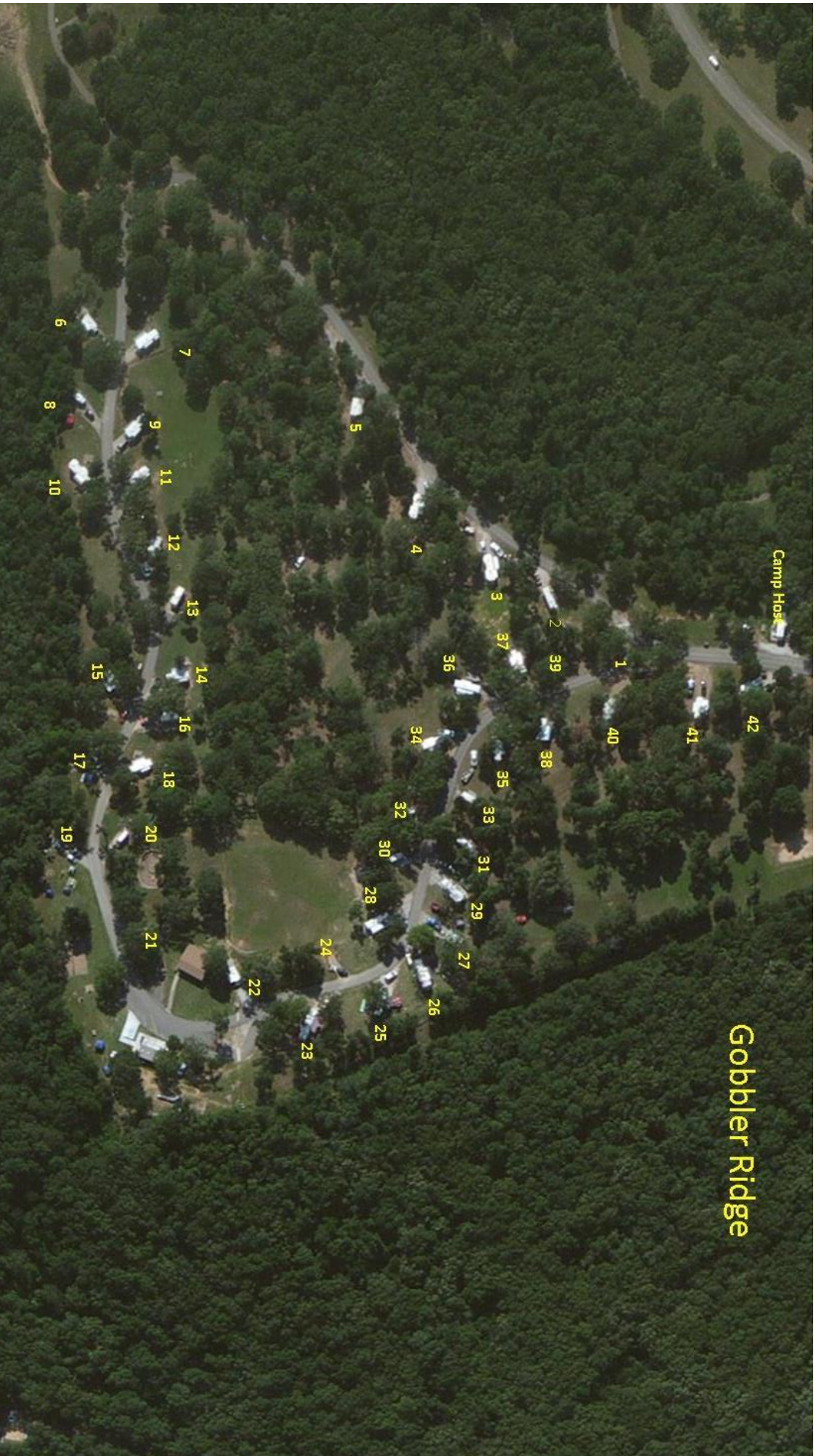
10

12

6

11

9



Camp Host

Gobbler Ridge

6

8

10

15

17

19

21

22

23

24

25

26

27

28

29

30

31

32

33

34

35

36

37

38

39

40

41

42

1

2

3

4

5

7

9

11

12

13

14

16

18

20

21

22

23

24

25

26

27

28

29

30

31

32

33

34

35

36

37

38

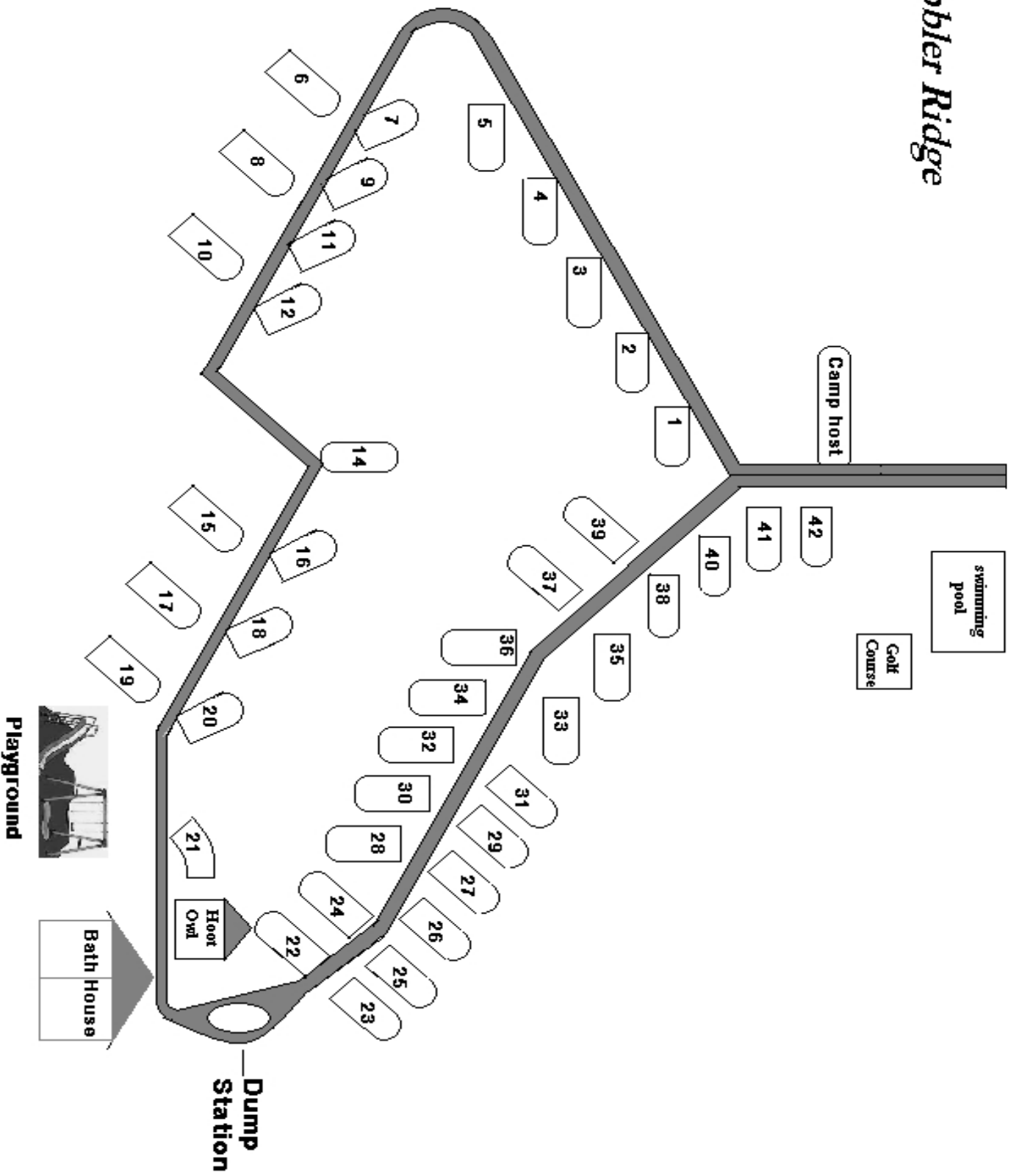
39

40

41

42

Gobbler Ridge



GREENLEAF STATE PARK GOBBLER RIDGE RV SITES

Site Number	G/C	Length	Sunny/Shady	Amp	Notes
1	Con	32-40 ft.	Part Shady	30	Nice
2	Con	32-40 ft.	Part Shady	30	Nice
3	Con	32-40 ft.	Shady	30	Nice
4	Con	32-40 ft.	Sunny	30	Nice
5	Con	32-40 ft.	Shady	30	Nice
6	Gra	32-38 ft.	Shady	30	
7	Con	32-40 ft.	Sunny	30	
8	Gra	32-38 ft.	Sunny	30	
9	Con	32-40 ft.	Part Shady	30	
10	Gra	32-38 ft.	Part Shady	30	
11	Con	32-40 ft.	Part Shady	30	
12	Con	28-32 ft.	Shady	50	
13	Con	32-34 ft.	Part Shady	50	
14	Con	28-32 ft.	Part Shady	50	
15	Gra	28-32 ft.	Part Shady	30	
16	Con	28-32 ft.	Part Shady	50	
17	Gra	28-32 ft.	Shady	30	
18	Gra	32-40 ft.	Part shady	30	
19	Con	32-40 ft.	Sunny	50	Close to playground
20	Con	28-32 ft.	Part Shady	50	Close to playground
21	Gra	32-40 ft.	Sunny	50	Pull Through South Side of Hoot Owl
22	Gra	32-38 ft.	Part Shady	50	North side of Hoot Owl
23	Con	32-40 ft.	Sunny	50	
24	Asphalt	25 ft. & under	Part Shady	50	
25	Con	32-40 ft.	Sunny	30	
26	Con	32-40 ft.	Sunny	30	
27	Con	32-40 ft.	Part shady	30	
28	Con	32-40 ft.	Sunny	30	
29	Con	32-40 ft.	Sunny	30	
30	Con	32-40 ft.	Part shady	30	
31	Gra	28 - 32 ft.	Shady	30	
32	Gra	32-38 ft.	Shady	30	
33	Gra	28 ft. and under	Part Shady	30	
34	Con	32-38 ft.	Sunny	50	Nice
35	Con	32-40 ft.	Sunny	50	Nice
36	Con	32-38 ft.	Part Shady	50	Nice
37	Con	28-32 ft.	Shady	50	Nice
38	Con	32-40 ft.	Shady	50	Nice
39	Con	32-40 ft.	Shady	50	Nice
40	Con	32-40 ft.	Part shady	50	Nice
41	Con	32-40 ft.	Part Shady	50	Nice
42	Con	32-40 ft.	Shady	30	Nice

CAMPGROUNDS

Park visitors are invited to set up on an unoccupied space; camp host or ranger will come around and collect appropriate fees. You may pay with cash or credit card. We do not accept checks.

Gobbler Ridge - Camp Host on premises - Reservations allowed. Closed Dec/Jan/Feb.

42 semi-modern sites (water and electric), campground map available.

Rates: \$22 per night, most sites now feature 50 amps.

Reservations accepted in this Campground online at www.gocampok.com.

Deer Run – camp host on premises – No reservations allowed.

22 Modern hook-ups (water, electric and sewer). Campground map available.

Rates: \$25.00 -

4 semi-modern hook-ups with no sewer - Rates: \$22

Cypress Row – no reservations allowed. Closed Dec/Jan/Feb.

23 Semi-modern sites featuring water and electric. Campground map available.

Rates: \$22

Check out time for RV sites are 5 pm.

Playside sites 1-7- featuring water and electric – No reservations allowed.

7 semi- modern sites Rate: \$22 – campground map available.

Tent Sites

Eagle's Nest, Trailhead, Playside & Lake View. First come; first served.

Rates: \$14.00 per night per tent per site.