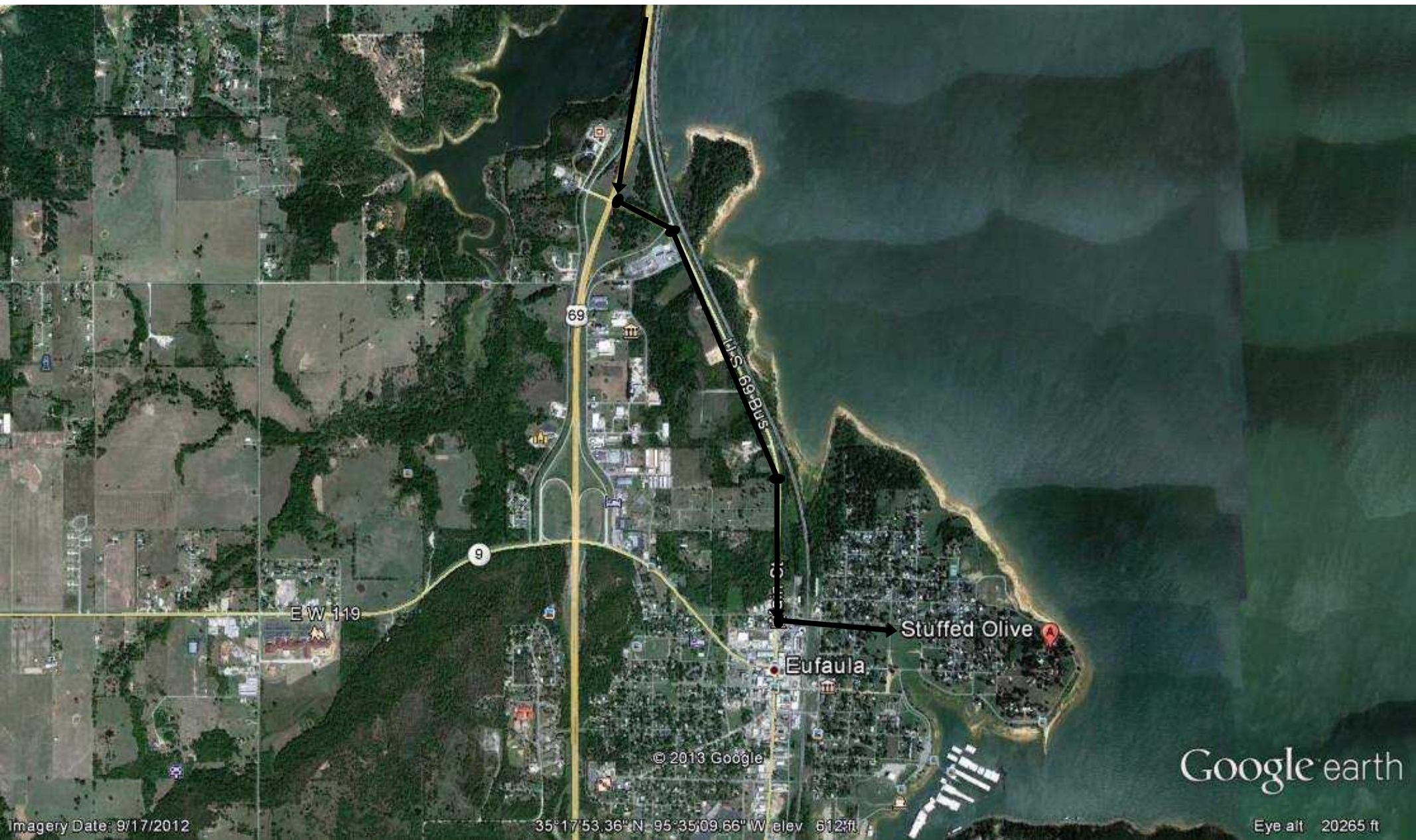


from OKC: E on I40, then S on US69, from Tulsa: S on US69

Note: some GPS systems are not accurate for 800 Lakeshore Dr, Eufaula, OK. Call Rick if you have Q's regarding finding it, 918.618.3050.





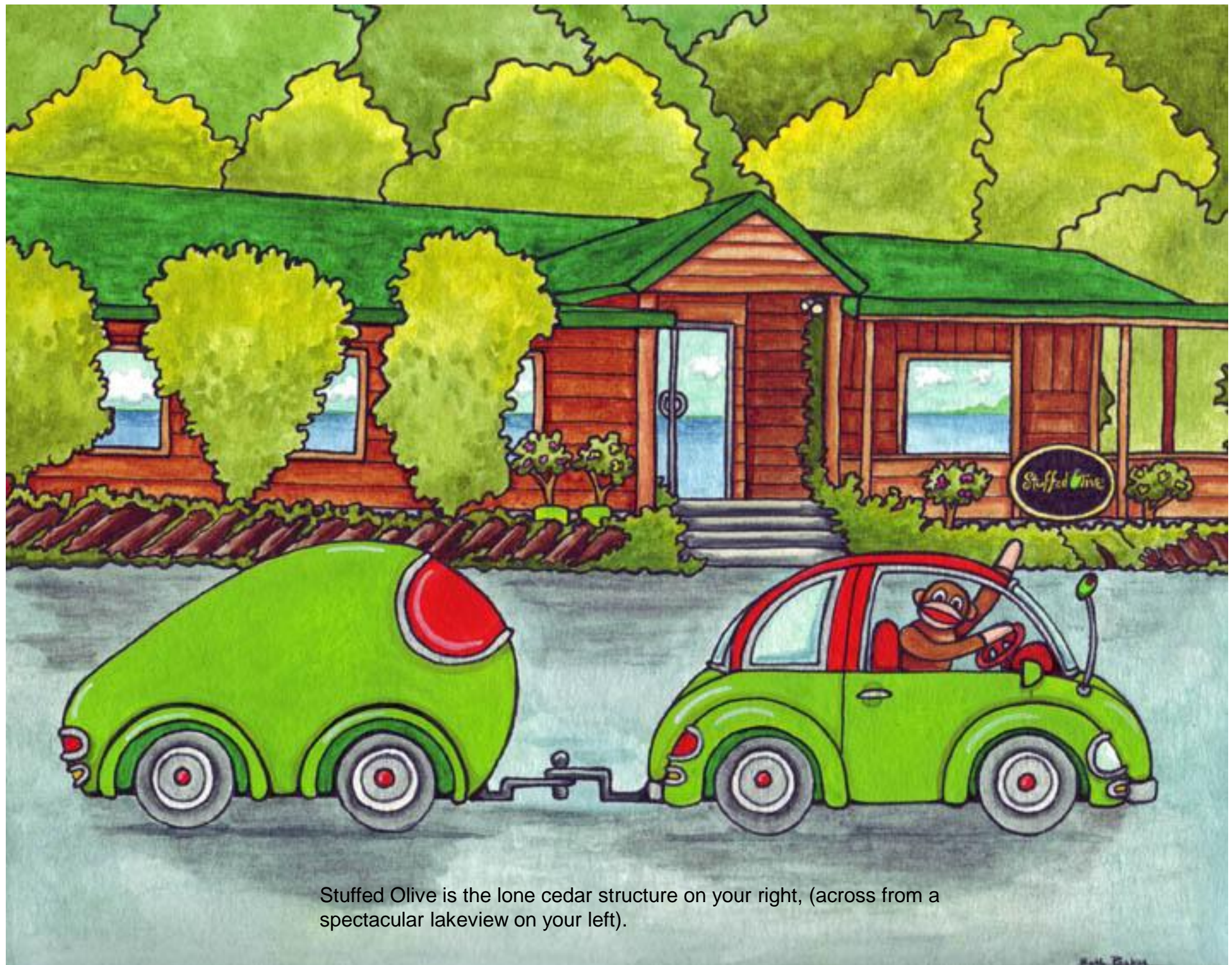
Take Bus 69 exit (Love's) crossing over 69 past Loves, proceed into town. Turn Left at City Hall (Broadway)





Continue E on Broadway until it T's, Left then turn Right onto Lakeshore Drive.





Stuffed Olive is the lone cedar structure on your right, (across from a spectacular lakeview on your left).