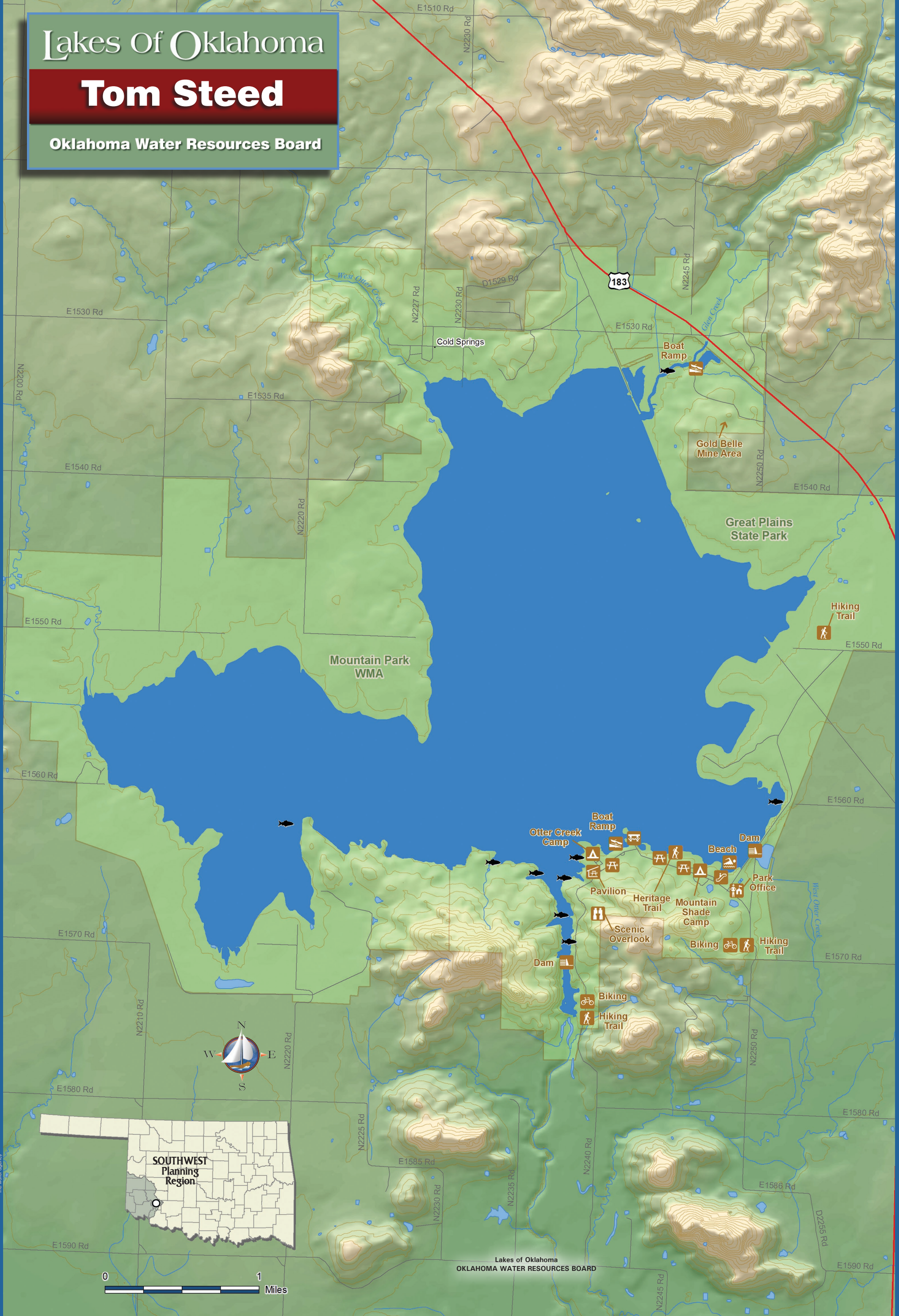


Lakes Of Oklahoma

Tom Steed

Oklahoma Water Resources Board



Area: 6,400 acres
Capacity: 88,970 acre-feet
Shoreline: 30 miles

BUREAU OF RECLAMATION
Purpose: WS, FC, R, FW
Normal Elevation: 1,411.0 feet



Tom Steed

1975