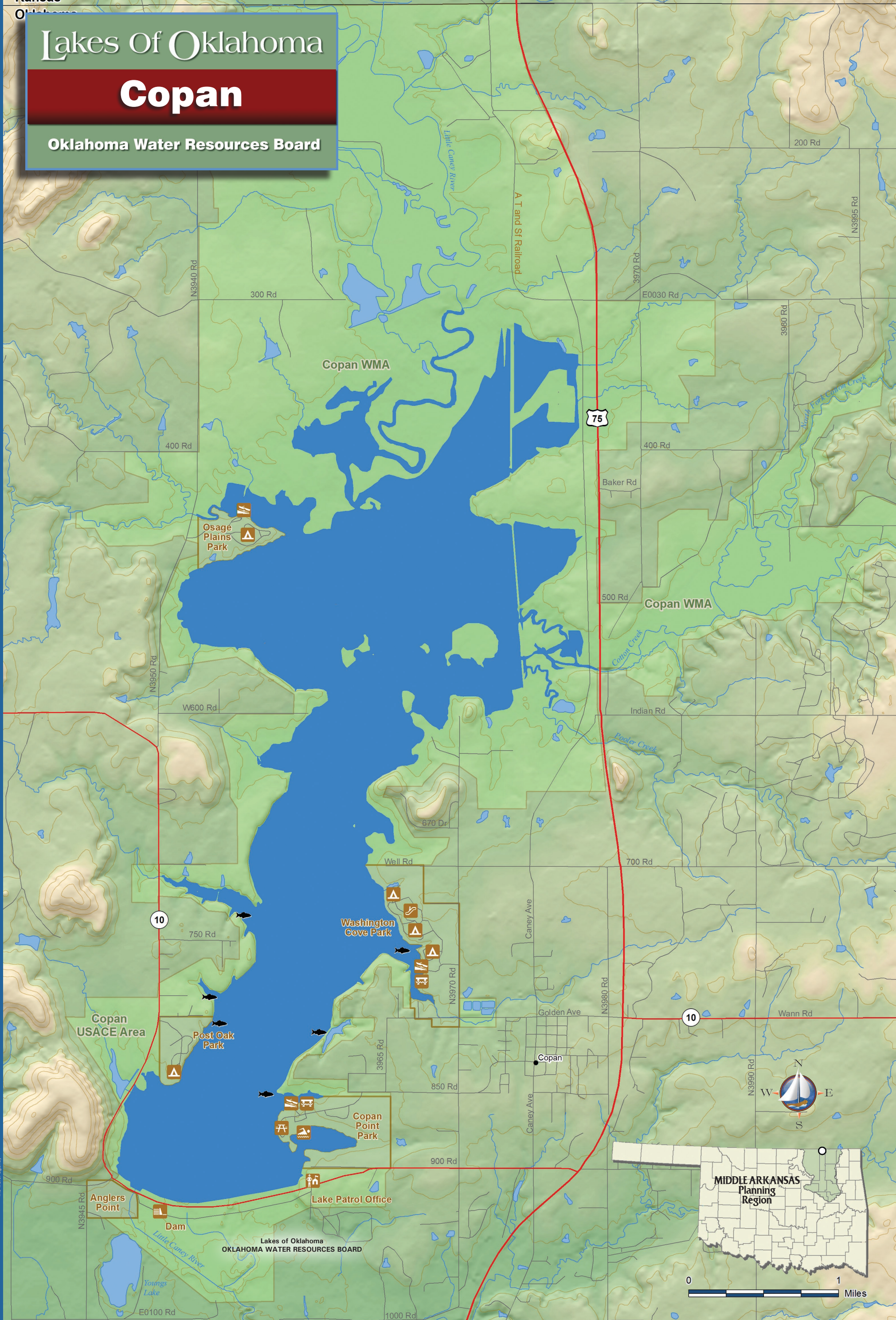


Lakes of Oklahoma

Copan

Oklahoma Water Resources Board



Area: 4,850 acres
Capacity: 43,400 acre-feet
Shoreline: 50 miles

US ARMY CORPS OF ENGINEERS
Purpose: FC, WS, WQ, R, FW
Normal Elevation: 710.0 feet



Copan

1983

