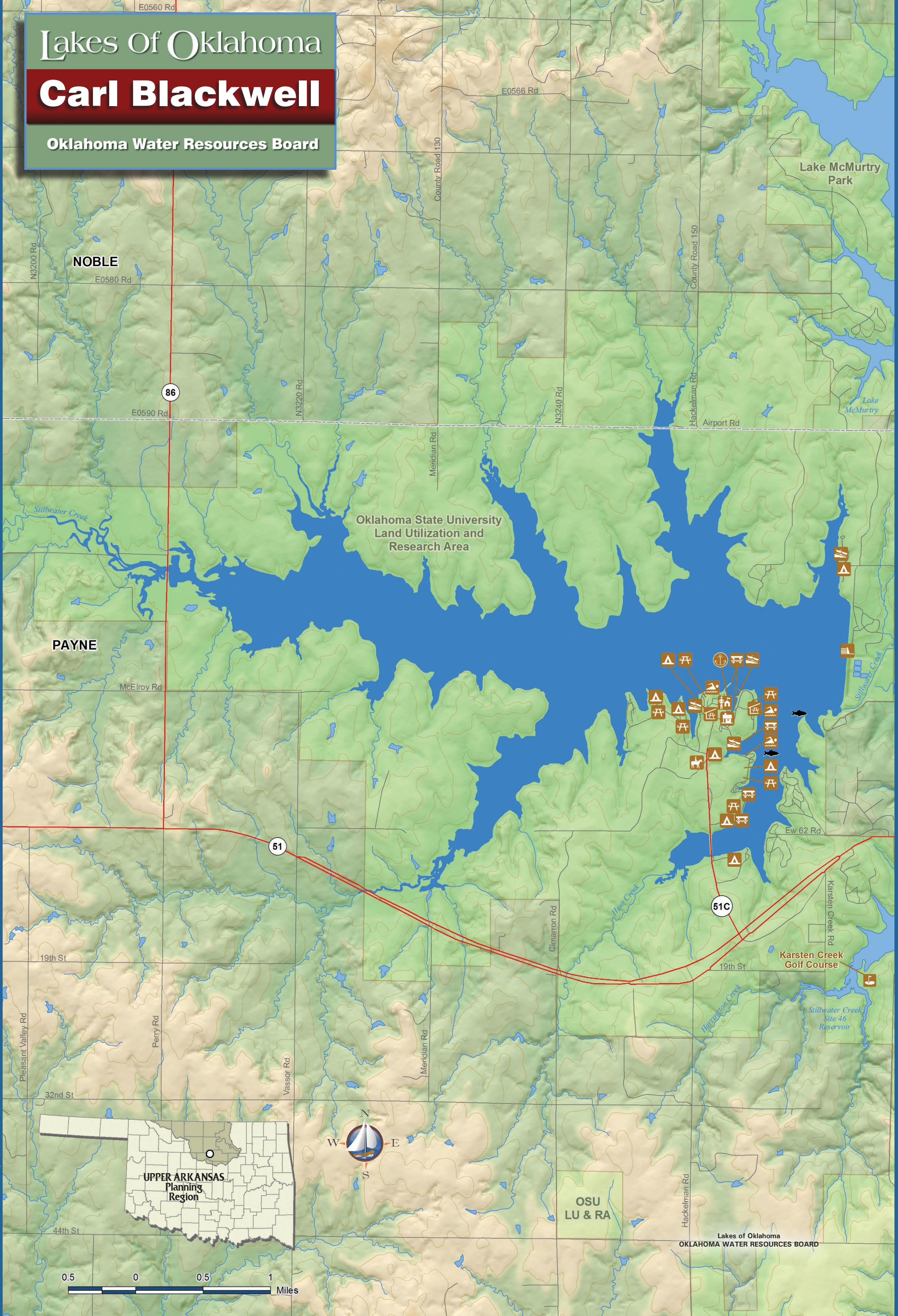


Lakes Of Oklahoma

Carl Blackwell

Oklahoma Water Resources Board



Carl Blackwell

1937

Area: 3,370 acres
Capacity: 61,500 acre-feet
Shoreline: 59 miles

OKLAHOMA STATE UNIVERSITY
Purpose: WS, 50R
Normal Elevation: 944.0 feet