

## Basic Full Day Field Trip

9am-2pm

(this is only an example and can be modified to fit your specific group)

9:00 am-Arrive at Nature Center, Introductions to the Nature Center and Staff followed by a Discovery Hike.

11:30 am-Lunch

12:15-Restroom Breaks

12:30-Educational Activity from the program topic chosen.

1:30-Exploration of Nature Center

2:00-Departure

There is no admission fee for your trip to the Bernice Nature Center, donations are accepted.

### A note for Teachers and Leaders:

Please contact us if you need a special program that isn't listed in this brochure. Arrangements will be made. Programs held away from the park typically last one to two hours and can be held either in a class room, an auditorium, or an outdoor classroom. We prefer groups of 50 or less. Groups larger than 50 will require advance approval from the park manager and will need to schedule one month in advance. All other groups need to be scheduled at least two weeks in advance by **calling 918-257-8330 or emailing us at [naturecenter@junct.com](mailto:naturecenter@junct.com)**. If you or your administrators would like to schedule a preview of a particular program, we would be happy to accommodate this request. Thank you and we look forward to seeing you and your group!

## BERNICE STATE PARK NATURE CENTER

A 3,000 square-foot, state-of-the-art building houses the Bernice Nature Center. Live exhibits of native wildlife, a view inside an active beehive and a 750-gallon aquarium filled with native fish species are just a few of the highlights found inside. Walk along the one-half mile paved trail or venture into the primitive woodlands, across two creeks, and along the shores of Grand Lake. Climb the observation tower overlooking the lake to watch water fowl basking in the sun. Grand Lake has more than 59,000 surface acres of water and 1,300 miles of shoreline and the Nature Center captures the beautiful nature found in NE Oklahoma.



### **Bernice Nature Center**

54101 E. HWY 85A  
Bernice, Ok 74331

Phone: 918-257-8330  
Fax: 918-257-8339

E-mail: [naturecenter@junct.com](mailto:naturecenter@junct.com)

# Bernice Nature Center

NATURE  
PROGRAMS  
FOR YOUR  
SCHOOL OR  
GROUP



**BERNICE STATE  
PARK**

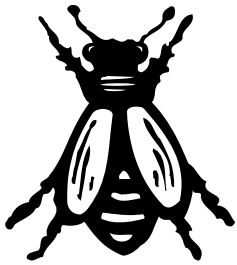
**OKLAHOMA  
STATE PARKS**



# INTERPRETIVE NATURE PROGRAMS

---

The Bernice Nature Center is happy to offer



nature based programs at  
No Cost for school groups.  
These programs address  
PASS Standards and are  
designed to connect  
curriculum to the outdoor

classroom that nature provides. All programs are instructed by the full time Park Naturalist and other professionals as needed. We offer the following pre-designed field trips which include; Habitats, Reptiles and Amphibians, Mammals, Water, Plants, Insects, and Soil. If one of these field trip topics does not fit your need, we would be happy to design a program that fits your educational needs. All programs can be adapted to your time at the Nature Center or they can be brought to your group. Although taking a trip to beautiful Grand Lake O' the Cherokees and the Bernice Nature Center will certainly add fun and real life hands on experiences to go along with the education. Please feel free to contact us with any questions that you may have about our interpretive nature based programs.

## Habitats

The 5 fundamental building blocks of a proper habitat will be discussed, explored, and investigated. An activity demonstrating a well balanced habitat and food web will be conducted.

Science PS1-1,2; PS2-1,2; PS3-1,2,3,4; PS4-2,3  
Life PS2-1,2,3  
Earth/Space PS3-2

## Reptiles and Amphibians

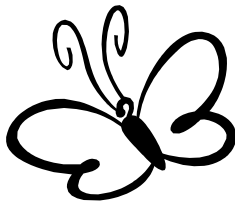
What makes a reptile a reptile and not an amphibian, in addition to habitats, life cycles, and special adaptation's will be discussed and explored. Live animals may be used for this program.

Science PS1-1,2; PS2-1, PS3-1,4; PS4-2,3  
Life PS2-1,2,3

## Mammals

Learn just what it takes for a mammal to be a mammal. This will cover the native mammals of NE Oklahoma, as well as a comparison of the words wild and domestic. Feel and observe the skins and skulls of our native mammals and discuss the tracks and scats of each. Live animals may be used for this program.

Science PS1-1,2; PS2-1,2; PS3-1,2,4; PS4-2  
Life PS2-1,2,3



## Water

Take a look into the life of a raindrop as we discuss the water cycle. Water conservation and the

importance of water to the surrounding environment will be discussed and explored. This program will take us to the shore line of beautiful Grand Lake O' the Cherokee's for further exploration.

Science PS1-1,2; PS2-1,2; PS3-1,2,3,4; PS4-1,2,3  
Physical PS1-1  
Life PS2-1,3 Earth/Space PS3-2

## Plants

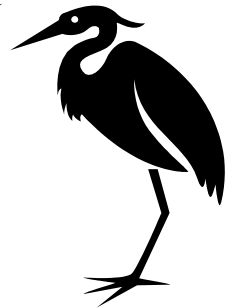
From trees, to shrubs, to flowers, and grasses we will cover the important role plants play in our ecosystem. We will discuss how plants get their water and food, as well as how new plants start out life. Students will take on the role of a plant in the activity for this program.

Science PS1-1,2; PS2-1,2; PS3-1,4  
Life PS2-1,2,3

## Insects

Insects are the largest group of organisms in the world. With so many different species, the sky is the limit on discussions. We will discuss the defining characteristics of insects as well as discuss the life cycle of these sometimes tiny creatures.

Science PS1-1,2; PS2-1,2;  
PS3-1,3,4; PS4-2  
Life PS2-1,2,3



## Soil

Often mistaken for that dirty word "DIRT" we will take a closer look at that stuff we walk around on called soil. We will take a closer look at what makes soil healthy and the animals that use soil as part of their habitat. We will talk about how soil can move and how some of those movements have affected our Oklahoma history. This program may get a little 'dirty' and use live animals.

Science PS1-1,2; PS2-1; PS3-1,3,4  
Life PS2-1,2,3 Earth/Space PS3-2

\*Interpretive nature programs are correlated to 3rd grade PASS Skills\*